

# Where we are?

Vladimir Kušan, PhD

OIKON Ltd. - Institute for Applied Ecology

[vkusan@oikon.hr](mailto:vkusan@oikon.hr)



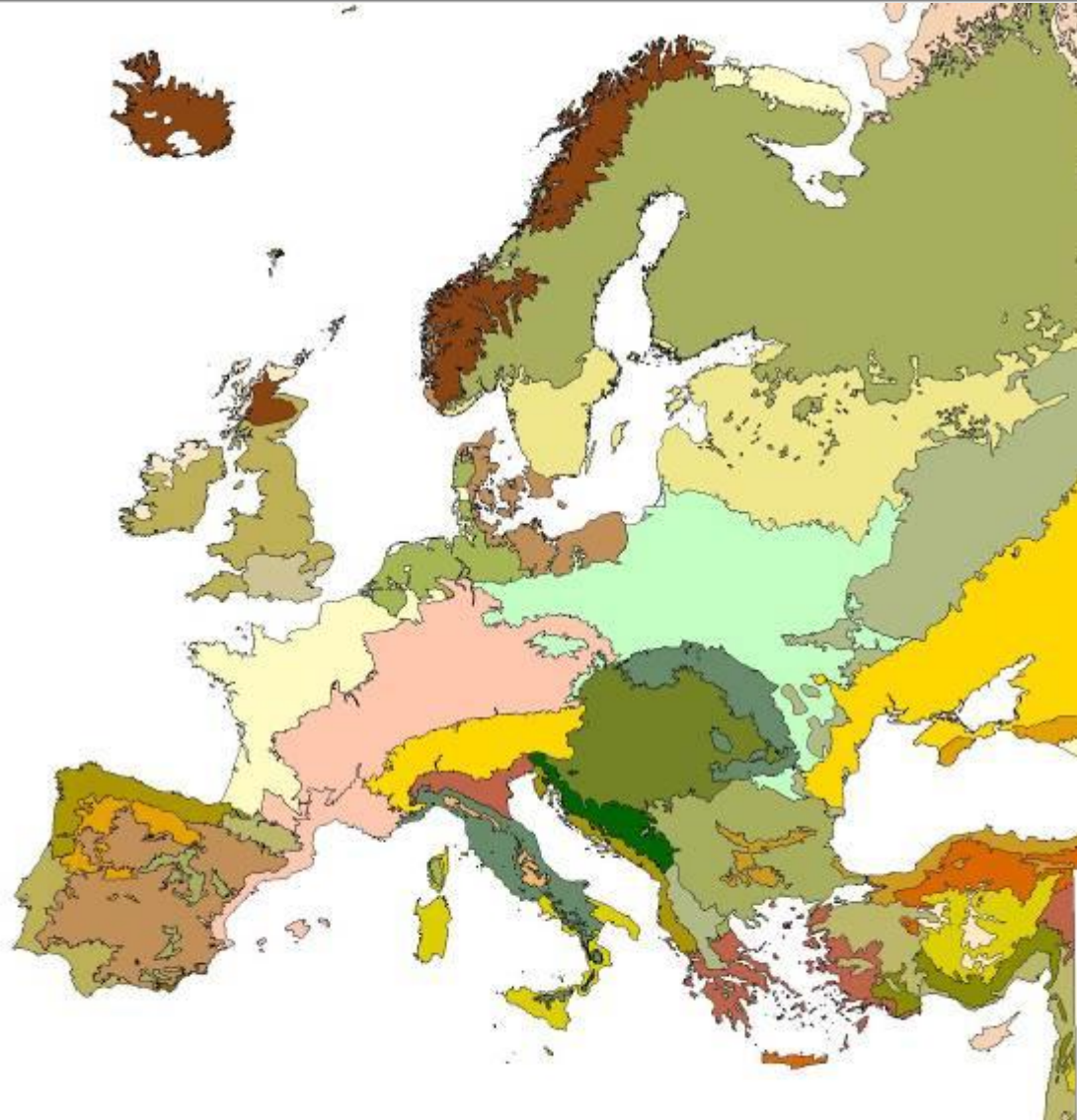
**THE GLOBE PROGRAM**  
CONNECTING THE NEXT GENERATION OF SCIENTISTS

# Croatia



THE TREE RING PROJECT  
CONNECTING THE NEXT GENERATION OF SCIENTISTS

# Ecoregions in Europe



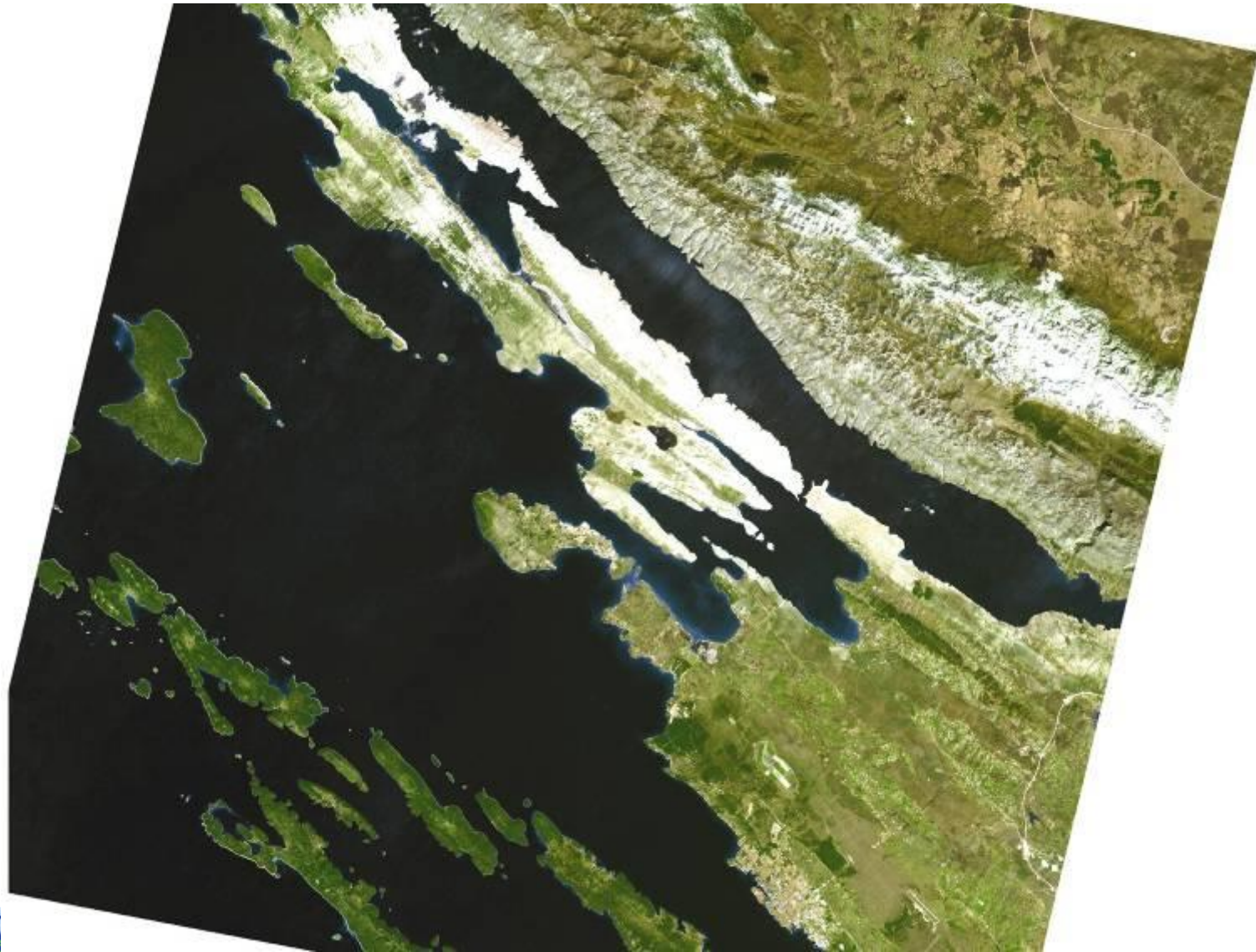
# Ecoregions in Croatia



**THE GLOBE PROGRAM**  
CONNECTING THE NEXT GENERATION OF SCIENTISTS

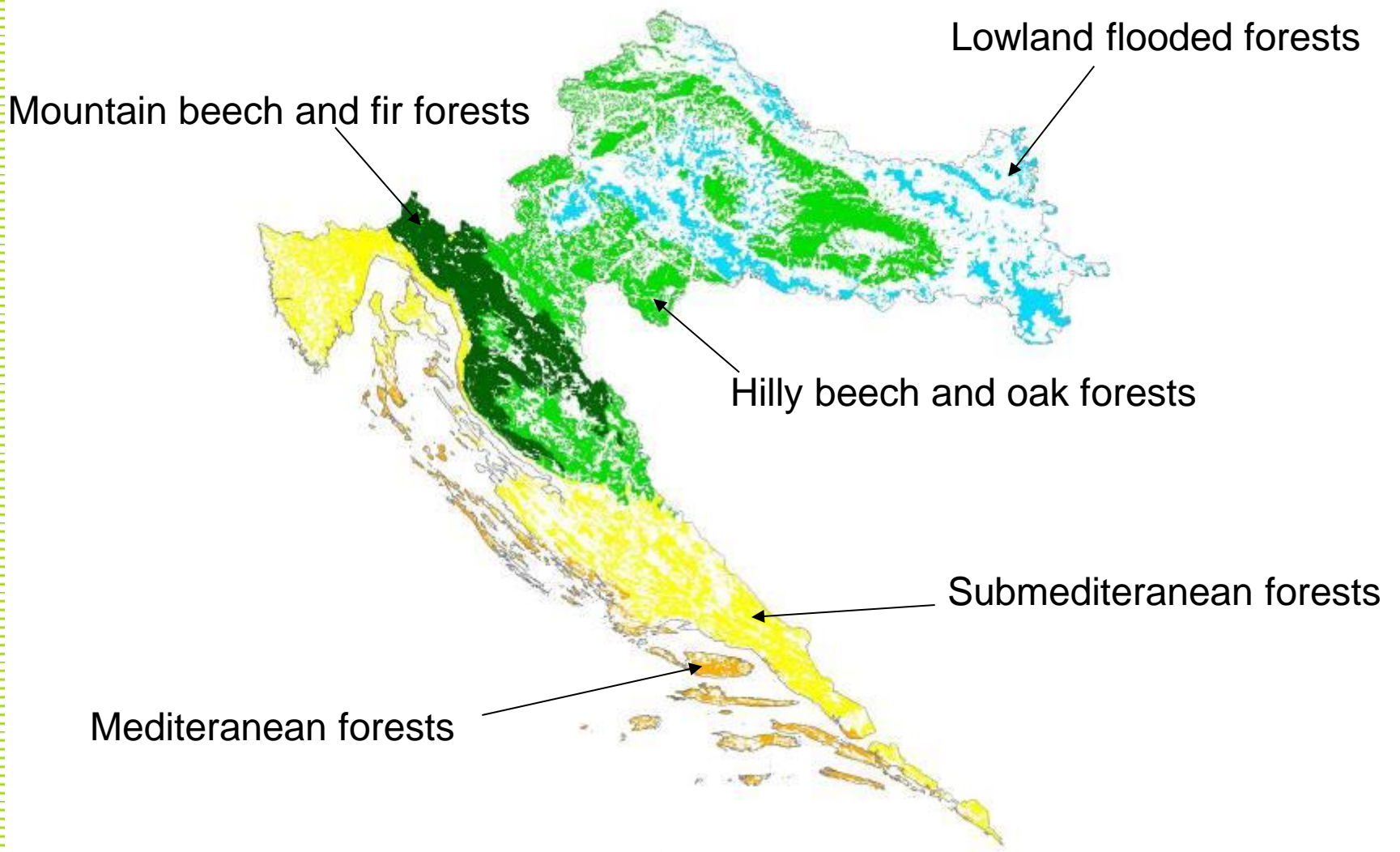


# Climate

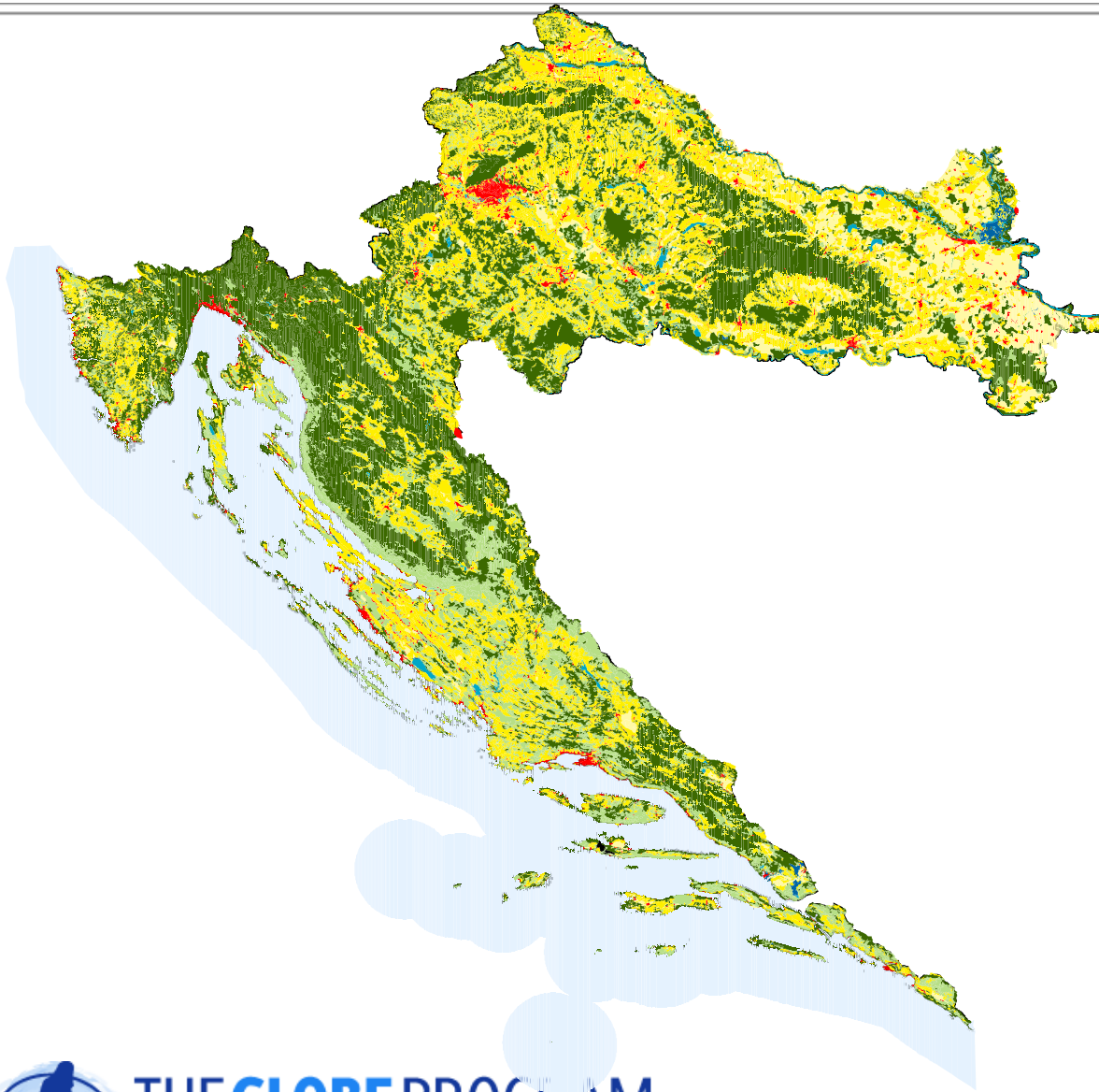


THE GLOBAL GREEN NETWORK  
CONNECTING THE NEXT GENERATION OF SCIENTISTS

# Bio climates



# Landscape

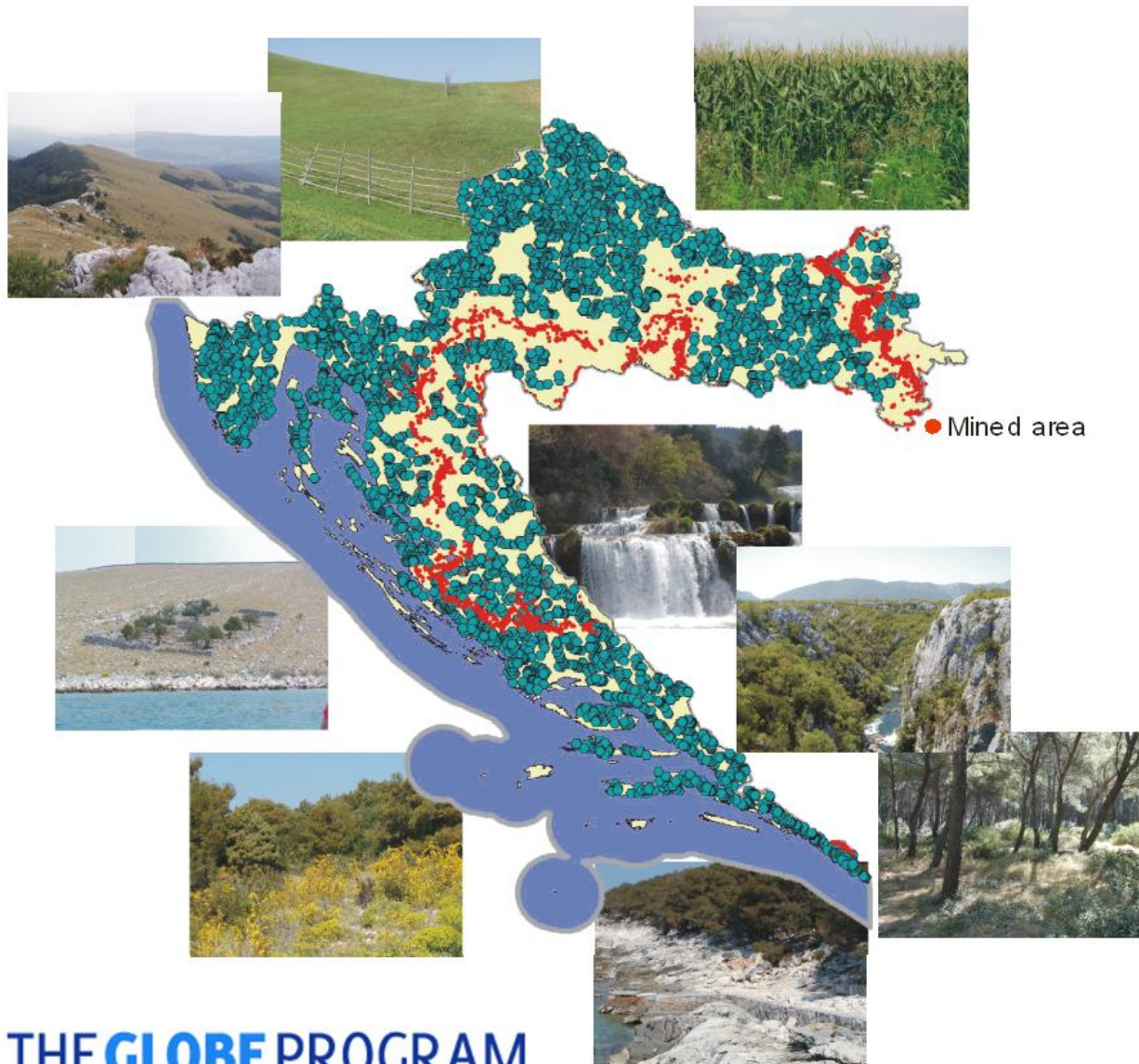


## Dominant landscapes

-  artificial territories
-  strongly artificial vegetated areas
-  less artificial vegetated areas
-  forests
-  non-wooded semi-natural areas
-  wetlands
-  inland water surfaces



# Landscape





# Croatia - Krk



**THE GLOBE PROGRAM**  
CONNECTING THE NEXT GENERATION OF SCIENTISTS

# Krk - Baška



Vrbnik

Krk

Baška



**THE GLOBE PROGRAM**  
CONNECTING THE NEXT GENERATION OF SCIENTISTS



**THE GLOBE PROGRAM**  
CONNECTING THE NEXT GENERATION OF SCIENTISTS



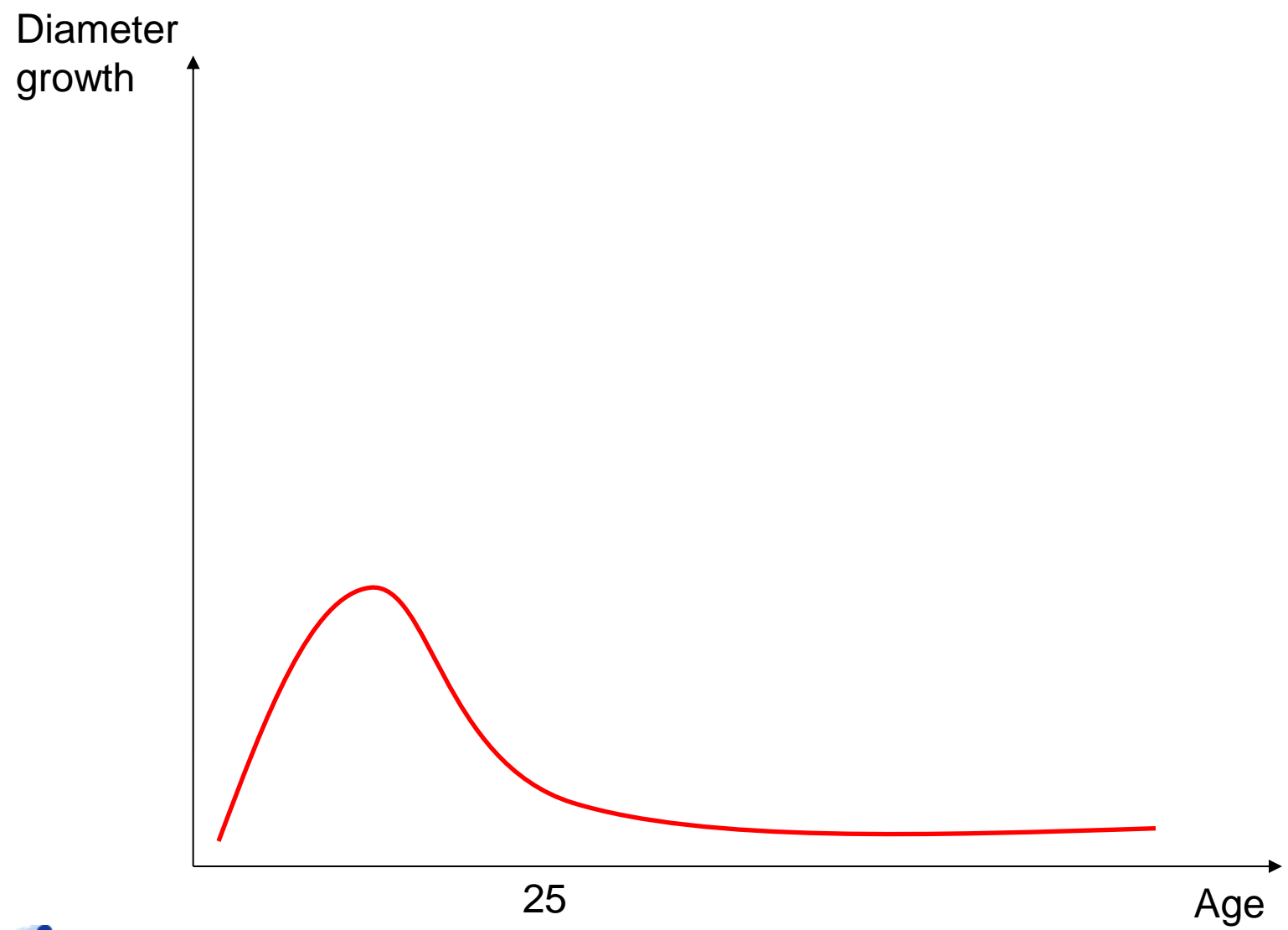
# Choosing the trees

## Three main things to think about

- age of the tree
- its position in stand
- its condition



# Age of the tree



**THE GLOBE PROGRAM**  
CONNECTING THE NEXT GENERATION OF SCIENTISTS

# Its position in stand





# Its condition



**THE GLOBE PROGRAM**  
CONNECTING THE NEXT GENERATION OF SCIENTISTS



# Try to avoid



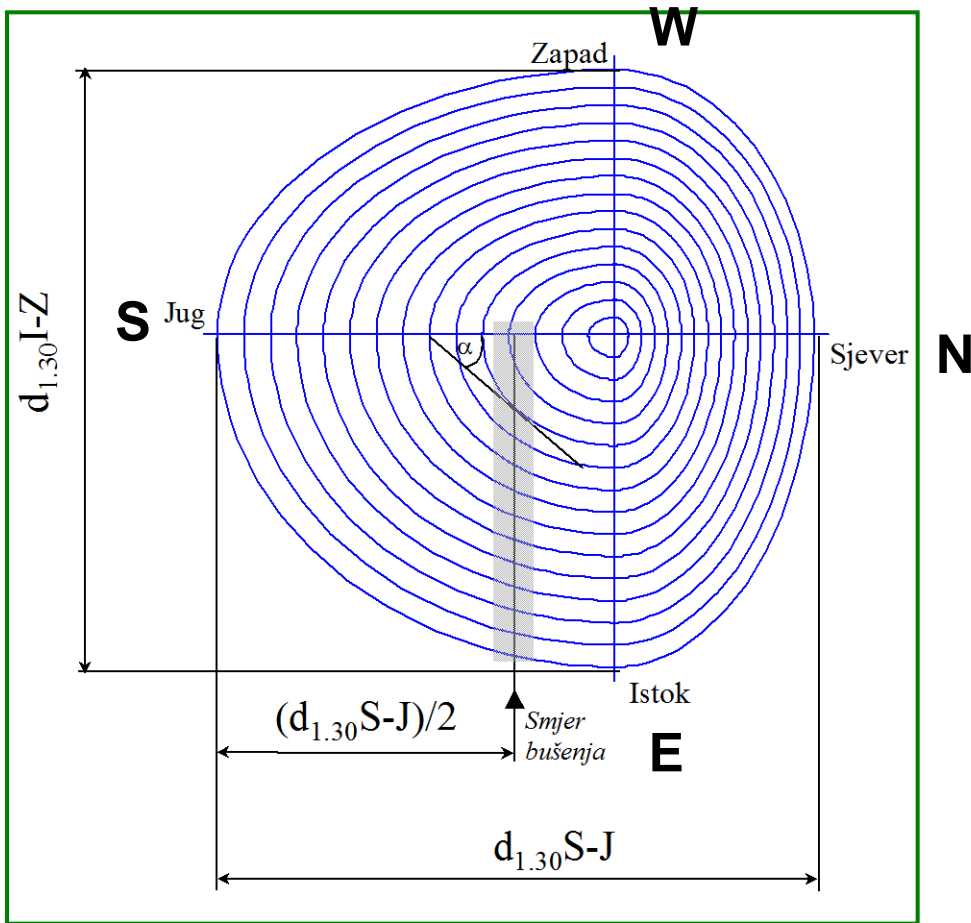


# Try to avoid



**THE GLOBE PROGRAM**  
CONNECTING THE NEXT GENERATION OF SCIENTISTS





# Good



# Poor

